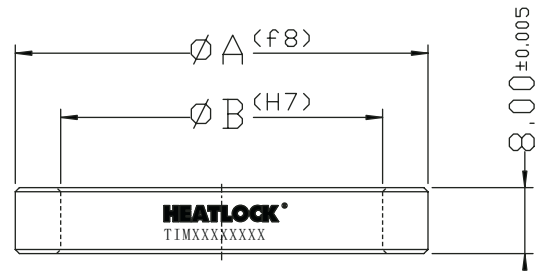
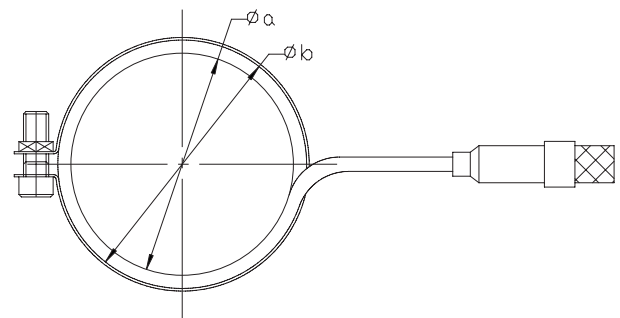


## Titanium Ring



| Size   | Item code   | ØA | ØB |
|--------|-------------|----|----|
| Size 1 | TIM03002308 | 30 | 23 |
| Size 2 | TIM03602708 | 36 | 27 |
|        | TIM04002708 | 40 | 27 |
|        | TIM05002708 | 50 | 27 |
| Size 3 | TIM05003908 | 50 | 39 |
| Size 4 | TIM05404408 | 54 | 44 |

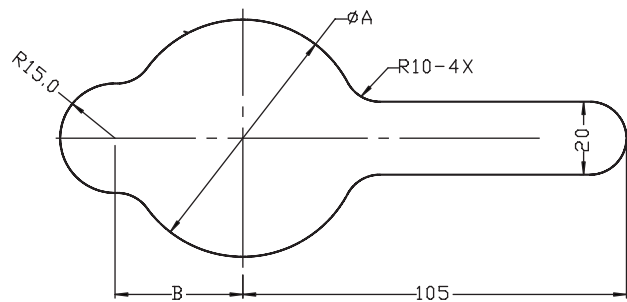
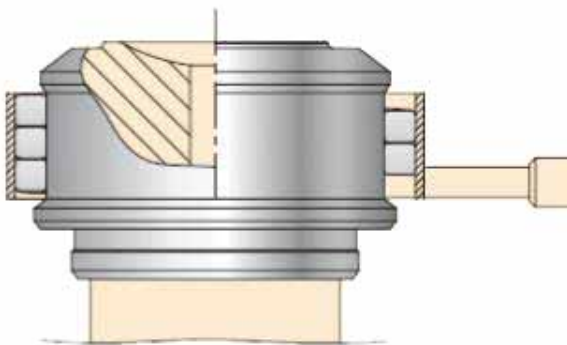
## Nozzle band heater



| Part No.      | Dimension | a  | b  | Watts |
|---------------|-----------|----|----|-------|
| D-CY-BH127150 | 33x10     | 27 | 33 | 150   |
| D-CY-BH233200 | 39x10     | 33 | 39 | 200   |
| D-CY-BH347250 | 53x10     | 47 | 53 | 250   |
| D-CY-BH451300 | 57x10     | 51 | 57 | 300   |

| Part No.     | White (2x)   | Live           |
|--------------|--------------|----------------|
|              | Yellow/Green | Earth          |
| Thermocouple | Red          | Negative [ + ] |
|              | Blue         | Positive [ - ] |

## Nozzle band heater bore



| Part No.      | A  | B  |
|---------------|----|----|
| D-CY-BH127150 | 40 | 30 |
| D-CY-BH233200 | 45 | 32 |
| D-CY-BH347250 | 62 | 40 |
| D-CY-BH451300 | 65 | 40 |