

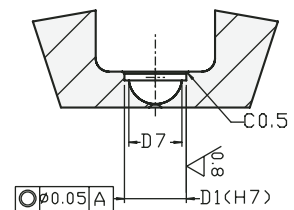
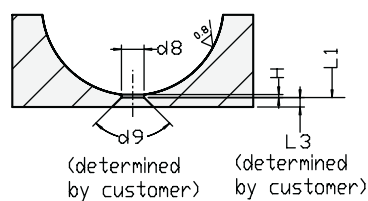
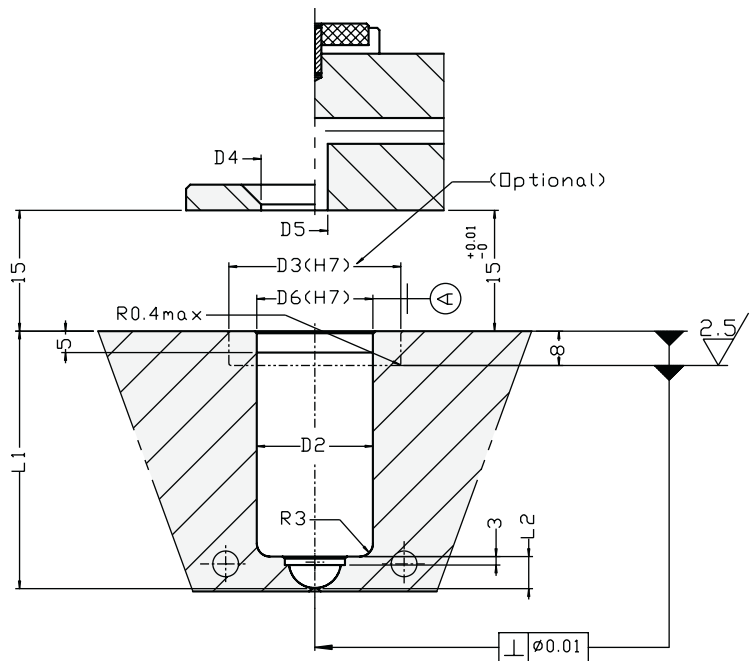
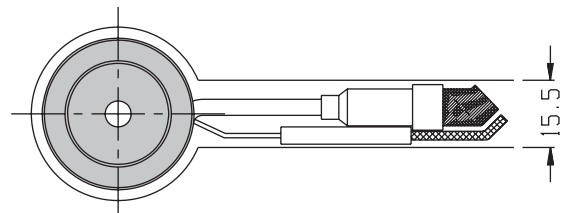
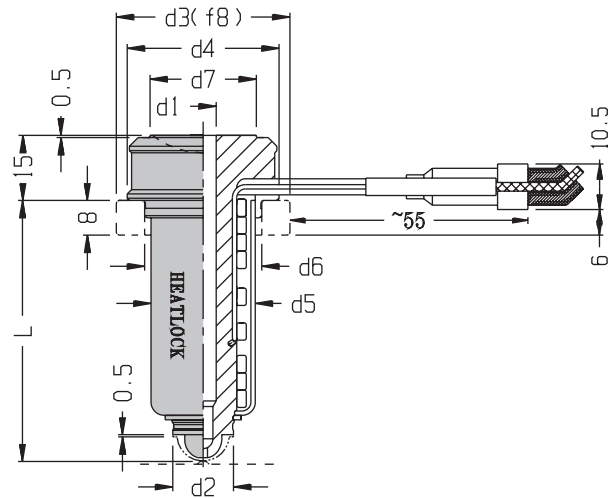
# A1-TP Series

**HEATLOCK®**



## A1-TP Series Features

- Easy to install, easy to use
- Fast gate cooling
- Suitable for direct gate or gate on runners
- For shot weights up to 1650 gram
- Ceramic insulation optional



## A1TP Series

(mm)

Size	L	L1	d1	d2	d3	d4	d5	d6	d7	d8	L2	H	D1	D2	D3	D4	D5	D6	D7
A1TP1040	40	40.11	4	11	C30 T30	29	20	23	18	≥0.6	6	0.2	11	23	C30 T30	20	6	23	9
A1TP1050	50	50.13																	
A1TP1060	60	60.15																	
A1TP1080	80	80.19																	
A1TP1100	100	100.23																	
A1TP1120	120	120.26																	
A1TP2040	40	40.08	6	14	C40 T36	35	24	27	24.5	≥0.8	7.5	0.2	14	27	C40 T36	26.5	6	27	12
A1TP2060	60	60.16																	
A1TP2080	80	80.20																	
A1TP2100	100	100.24																	
A1TP2120	120	120.28																	
A1TP2140	140	140.31																	
A1TP2160	160	160.35																	
A1TP3060	60	60.17	9	19	C62 T50	48	34	39	32	≥1.2	9.5	0.3	19	39	C62 T50	34	9	39	16.5
A1TP3080	80	80.21																	
A1TP3100	100	100.25																	
A1TP3120	120	120.29																	
A1TP3140	140	140.32																	
A1TP3160	160	160.36																	
A1TP3180	180	180.40																	
A1TP4080	80	80.21																	
A1TP4100	100	100.25																	
A1TP4120	120	120.29																	
A1TP4140	140	140.33																	
A1TP4160	160	160.37																	
A1TP4180	180	180.40																	
A1TP4200	200	200.44																	

\*\* D3 Dimension: T is Titanium

### Length Expansion (L1 = L + X.XX) (mm)

The software nozzle est.rar calculating L1 length is available on our website, please go to <http://www.heatlock.com/cad/cad.htm> and use the pull down menu to download it.

(mm)

Size	Shot Weight (g)	Low-viscosity	Med-viscosity	High-viscosity	Gate size
A1-TP size 1	<200	<100	<40	d8 is the minimum, the maximum is 3mm	
A1-TP size 2	<500	<270	<150	d8 is the minimum, the maximum is 4mm	
A1-TP size 3	<850	<400	<280	d8 is the minimum, the maximum is 5mm	
A1-TP size 4	<1650	<800	<550	d8 is the minimum, the maximum is 6mm	

Order example :

**A1TP--X--XXX---XX**

(Series No.) (L) (d2)

**A1TP 2 040 14**