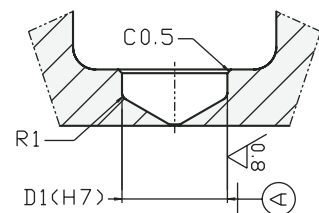
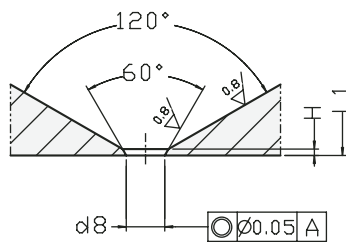
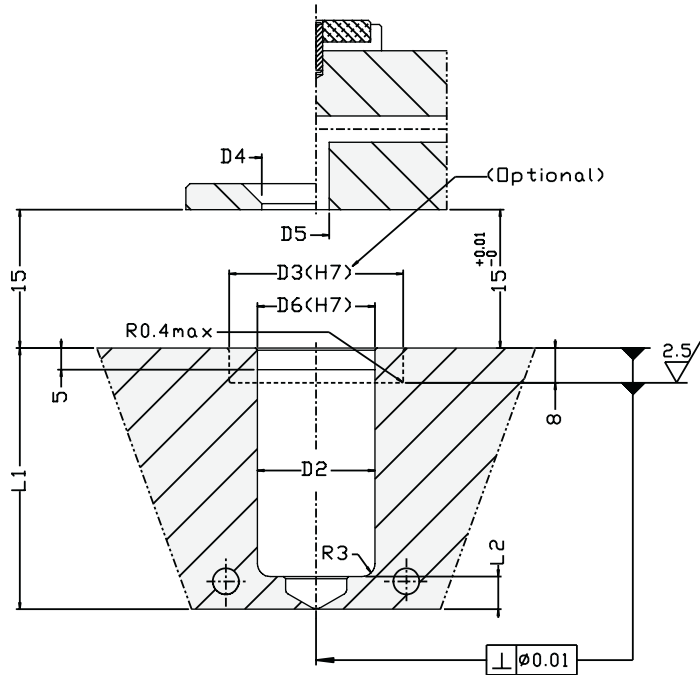
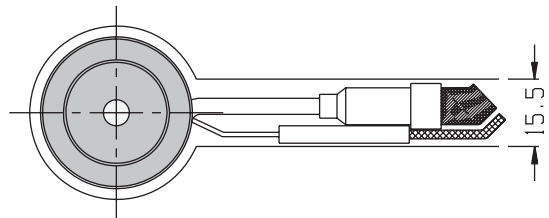
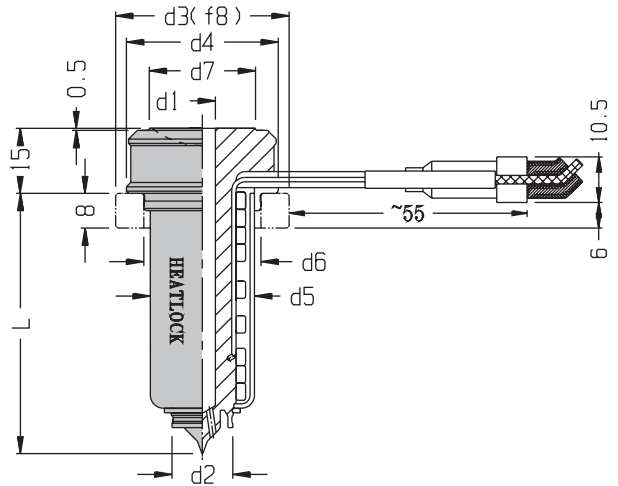


A1-TN Series

HEATLOCK®



A1-TN Series Features

- Easy to install, easy to use
- Small residue
- For direct gate on the part
- For shot weights up to 1200 gram
- Ceramic insulation optional

A1TN Series

(mm)

Size	L	L1	d1	d2	d3	d4	d5	d6	d7	d8	L2	D1	D2	D3	D4	D5	D6	H
A1TN1040	40	40.11	4	11	C30 T30	29	20	23	18	≥0.6	6	11	23	C30 T30	20	6	23	0.2
A1TN1050	50	50.13																
A1TN1060	60	60.15																
A1TN1080	80	80.19																
A1TN1100	100	100.23																
A1TN1120	120	120.26																
A1TN2040	40	40.08	6	14	C40 T36	35	24	27	24.5	≥0.8	7.5	14	27	C40 T36	26.5	6	27	0.2
A1TN2060	60	60.16																
A1TN2080	80	80.20																
A1TN2100	100	100.24																
A1TN2120	120	120.28																
A1TN2140	140	140.31																
A1TN2160	160	160.35																
A1TN3060	60	60.17	9	19	C62 T50	48	34	39	32	≥1.2	9.5	19	39	C62 T50	34	9	39	0.3
A1TN3080	80	80.21																
A1TN3100	100	100.25																
A1TN3120	120	120.29																
A1TN3140	140	140.32																
A1TN3160	160	160.36																
A1TN3180	180	180.40																
A1TN4080	80	80.21																
A1TN4100	100	100.25																
A1TN4120	120	120.29																
A1TN4140	140	140.33																
A1TN4160	160	160.37																
A1TN4180	180	180.40																
A1TN4200	200	200.44																

** D3 Dimension: T is Titanium

Length Expansion (L1 = L + X.XX) (mm)

The software nozzle est.rar calculating L1 length is available on our website, please go to <http://www.heatlock.com/cad/cad.htm> and use the pull down menu to download it.

(mm)

Size	Shot Weight (g)	Low-viscosity	Med-viscosity	High-viscosity	Gate size
A1-TN size 1	<140	<60	<20	d8 is the minimum, the maximum is 2mm	
A1-TN size 2	<330	<220	<70	d8 is the minimum, the maximum is 3mm	
A1-TN size 3	<580	<340	<200	d8 is the minimum, the maximum is 3mm	
A1-TN size 4	<1200	<650	<400	d8 is the minimum, the maximum is 5mm	

Order example :

A1TN--X--XXX---XX

(Series No.) (L) (d2)

A1TN 2 040 14