

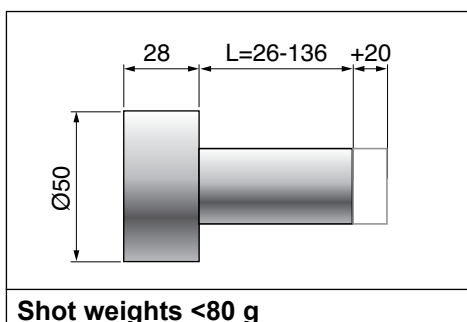
Heatlock TOP2, Torpedo tip

Features

- Replaceable heater.
- The torpedo is centered in the mould half. The tip is always correctly positioned in the gate.
- The heated torpedo is thermally insulated from the mould.
- There is no metal-to-metal contact between the torpedo tip and the mould; this minimizes cooling of the tip.

Egenskaper

- Värmepatronen är utbytbar.
- Ingen metallisk kontakt mellan torpedspets och formstål ger minsta möjliga avkylning av spetsen.
- Den uppvärmda torpeden är värmeisolerad från den kalla formen.
- Torpeden är centrerad i formhalvan. Spetsen får alltid rätt läge i förhållande till intaget.



TOP2

gives you possibilities with simple means build a mould for direct gating. The gate is made in the cavity plate so it can be used on surfaces that presented difficulties, ie. sloping surfaces.

Since the torpedo body is centred in the mould half and the melt flow is always along the torpedo length the tip will always be centred in the gate. The internal heater, which is replaceable, measures the temperature in the tip of the heater in order to provide good control over the gate area and give a minimal residue.

The torpedo is available with a special surface, TIN, for injecting glass filled plastics.

Tested with materials like glass filled PC, Polyurethane and ABS with flame resistance.

Can be used in single-cavity or multi-cavity applications, together with Heatlock standard manifolds or a custom made conventional manifold that is ceramically insulated.

TOP2

ger dig möjlighet att på ett enkelt sätt bygga ditt verktyg med direkt intag. Eftersom intaget görs direkt i formplattan kan man spruta in på ställen som normalt sett är besvärliga att placera ett intag på. Intagsresten blir minimal.

Genom att välja en konstruktion där torpedkroppen centrerats i formplattan och materialflödet flyter längs torpedens längdaxel är Torpedspetsen alltid centrerad i intaget samtidigt som man undviker fickor där material blir stående. Den invändiga värmepatronen som är utbytbar, har avkännaren placerad i spetsen för att kunna kontrollera intagets temperatur så noga som möjligt och därigenom minimera intagsresten.

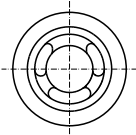
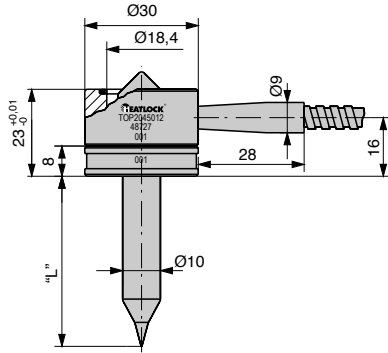
Torpeden kan levereras med en speciell ytbehandling, TIN för t.ex. sprutning av glasfiber-fyllda plaster.

Provad med material som glasklar resp. glasfiberfylld PC, Polyuretan och ABS med flamskyddsmedel.

Kan användas i enfacksmontering såväl som flerfacksverktyg, då antingen ihop med vårt helt isolerade fördelarsystem eller med en konventionell varmkanalbalk också den keramiskt isolerad..

Vi erbjuder en svensktillverkad kvalitetsprodukt till ett pris som vi säkert tror Du skall finna intressant.

more ►



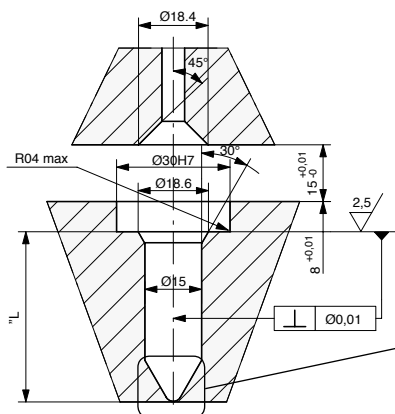
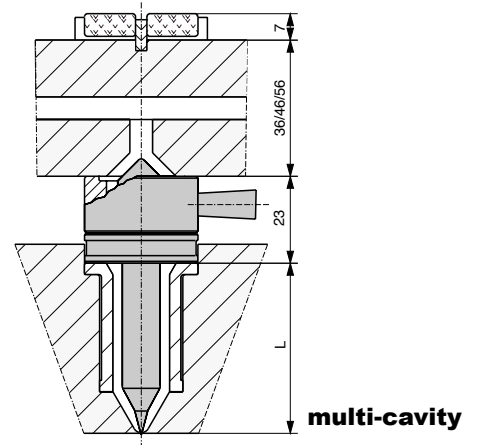
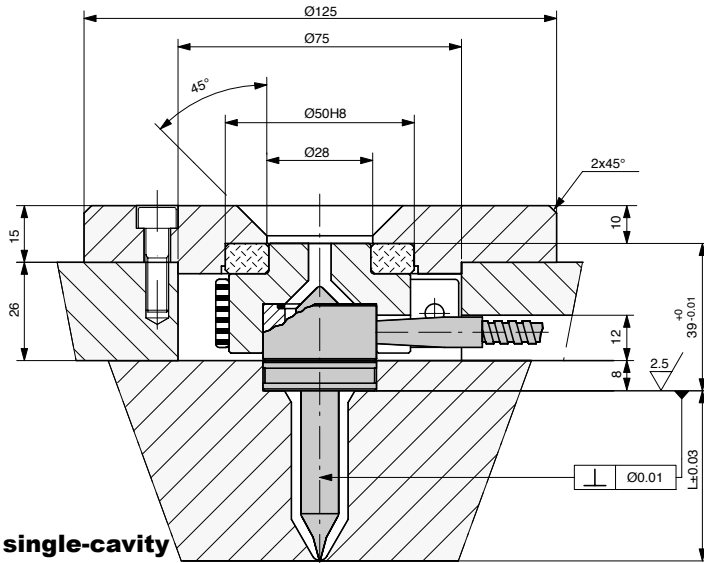
"L" mm	Part No.	
	Standard	TIN-coated tip
Single cavity including end cap bandheater and ceramic ring		
30	TOP2030011	TOP2030031
45	TOP2045011	TOP2045031
57	TOP2057011	TOP2057031
70	TOP2070011	TOP2070031
83	TOP2083011	TOP2083031
Multi-cavity all with O-ring 630		
30	TOP2030012	TOP2030032
45	TOP2045012	TOP2045032
57	TOP2057012	TOP2057032
70	TOP2070012	TOP2070032
83	TOP2083012	TOP2083032

Can be controlled with various types of temperature controllers intended for hot runner systems with 220/240 V using thermocouple of type Fe-CuNi.

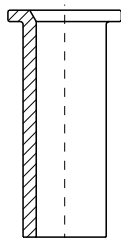
Recommended for the following maximum shot weights:

Low-viscosity plastic (PS,PE,PP)	80g
Med.-viscosity plastic (ABS,SAN, PA,POM)	40g
High-viscosity plastic (PC,PMMA, Noryl, Filled material)	30g

Can be used with a gate diameter of Ø0.6-3.0 mm.



more ▶



Insulating sleeve for torpedo

The insulating sleeve insulates the flow channel around the torpedo tip from the mould plate, so that the flow gap around the torpedo increases. This makes it possible to inject materials that requires a high mass temperature, as well as filled materials.

The insulating sleeve is supplied as shown in fig. and fits torpedoes with L=30-70 mm. Work the sleeve as described in the assembly instruction.

Isolerhylsa för Heatlock Torped TOP2

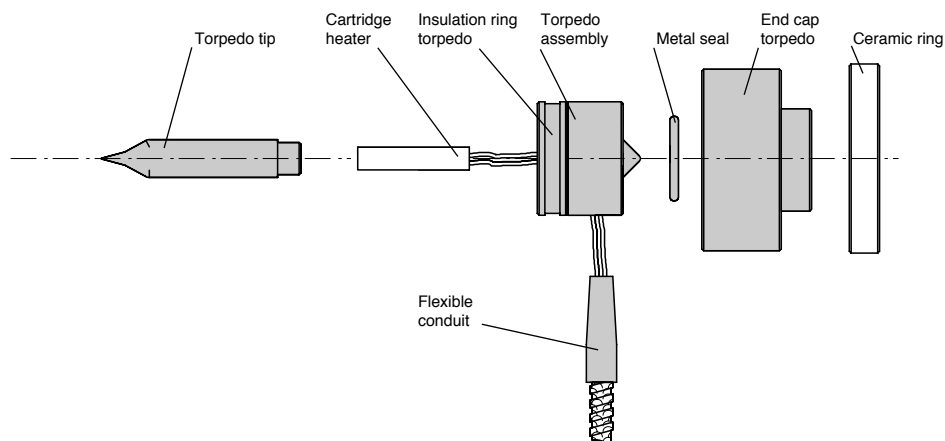
Isolerar flytkanalen runt torpedspetsen från formplattan. Detta minskar avkylningen av flytkanalerna så att den flytbara spalten runt torpeden ökar. Formsprutning av material som kräver hög massatemperatur, och fyllda material blir härigenom möjlig.

Isolerhylsan levereras enligt fig, och passar till torpeder med L=30–70mm. Bearbeta hylsan enligt monteringsanvisningen.

Part No.	Description
TOPPH07230	Insulation sleeve

**Prior to any assembly refer to our latest
assembly instruction, always available on our
web site www.heatlock.com**

more ►



TOP2	Torpedo assem.	(Torpedo assembled includes the 4 comp. below)				Heater band	Ceramic ring	Metal seal	Insul. ring torpedo	End cap torpedo
		Cartridge h.	Flex. cond.	Torpedo tip	Assembly					
TOP2030011	TOPP203050	T060300080	TOPP060850	TOPP203040	TOPP296100	B048020180	KE05002708	ORING00630	TOPP296150	TOPPBH3048
TOP2030012	TOPP203050	T060300080	TOPP060850	TOPP203040	TOPP296100	–	–	ORING00630	TOPP296150	–
TOP2045011	TOPP204550	T060380120	TOPP060850	TOPP204540	TOPP296100	B048020180	KE05002708	ORING00630	TOPP296150	TOPPBH3048
TOP2045012	TOPP204550	T060380120	TOPP060850	TOPP204540	TOPP296100	–	–	ORING00630	TOPP296150	–
TOP2057011	TOPP205750	T060500160	TOPP060850	TOPP205740	TOPP296100	B048020180	KE05002708	ORING00630	TOPP296150	TOPPBH3048
TOP2057012	TOPP205750	T060500160	TOPP060850	TOPP205740	TOPP296100	–	–	ORING00630	TOPP296150	–
TOP2070011	TOPP207050	T060650200	TOPP060850	TOPP207040	TOPP296100	B048020180	KE05002708	ORING00630	TOPP296150	TOPPBH3048
TOP2070012	TOPP207050	T060650200	TOPP060850	TOPP207040	TOPP296100	–	–	ORING00630	TOPP296150	–
TOP2083011	TOPP208350	T060750250	TOPP060850	TOPP208340	TOPP296100	B048020180	KE05002708	ORING00630	TOPP296150	TOPPBH3048
TOP2083012	TOPP208350	T060750250	TOPP060850	TOPP208340	TOPP296100	–	–	ORING00630	TOPP296150	–